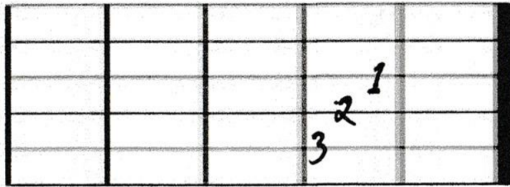


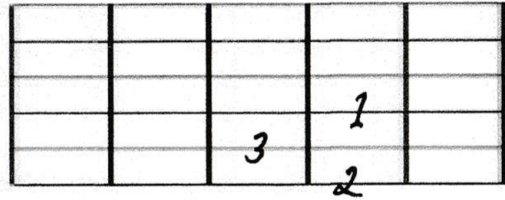
# FORMAS ARMÓNICAS MAYORES (TRIADAS)

## TRIADA DE LA MAYOR (A)

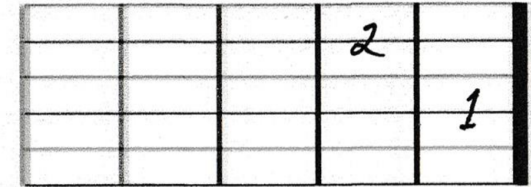
LA MAYOR (A)



RE MAYOR (D)

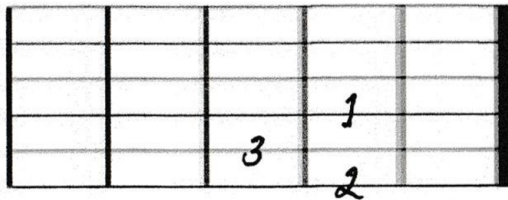


MI SÉPTIMA MAYOR (E7)

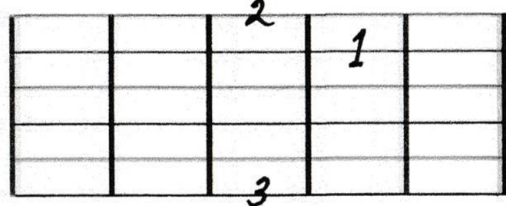


## TRIADA DE RE MAYOR (D)

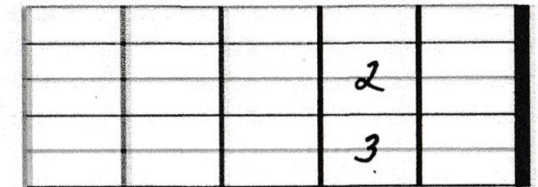
RE MAYOR (D)



SOL MAYOR (G)

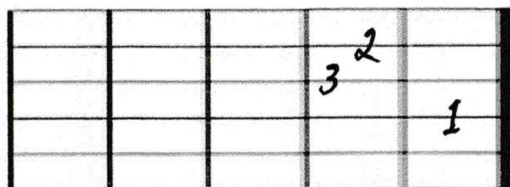


LA SÉPTIMA MAYOR (A7)

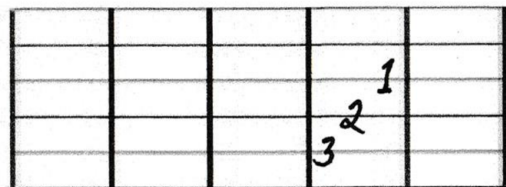


## TRIADA DE MI MAYOR (E)

MI MAYOR (E)



LA MAYOR (A)



SI SÉPTIMA MAYOR (B7)

